

## “Our Rainbow Room Rules!”

Elves on the Shelves and Leprechauns can not trick us when we begin our entertaining Math, Science, Literacy, gross and fine motor activities for students of all ages! Creative Thanksgiving Villages, Santa’s Workshop, an Air and Space Camp, the Winter Wonderland, “Our Town” Food Mart , Flower, Candy, Bakery Shops, the Post Office and Food Court are perfect for counting, sorting, patterning, sequencing, adding, subtracting, taking orders and paying bills. Spring brings children all a buzz with emerging insects or pond wildlife. Exploration with manipulatives, seeds and bulbs lead to blossoming flowers, then welcomes summer’s sea life. Clever use of carts, inclines wheelbarrows, pulleys with weights, magnets, aquaplay, and varying medias in texture tables bring great joy.

## “The Nature Nook”

Preschoolers participate in the Nature Rangers to provide food, water and shelter for our four legged or feathered friends. Keen observations help explorers identify plant and animal life, while learning many safety rules about the great outdoors.

The Discovery Trail encourages “I Spy” games such as Winnie the Pooh and the Hundred Acre Woods pals, a Turkey Trot, A Gingerbread Path and “What doesn’t belong in our woods?”

## ST. STEPHEN’S PRESCHOOL

2012-2013

9203 BRADDOCK RD.

BURKE, VA 22015

(703)978-9024

FAX (703)978-9023

STSTEPHENS**P**R**E**@VERIZON.NET

WWW.STSTEPHENSFAIRFAX.ORG

*Martha Johnson, Director*

*Sandy Kirkpatrick & Carole Smith  
Assistant Directors*



*Programs for children ages 1 1/2 to 5 years of age*

*Pre-Kindergarten, Brainy Bunch*

## OUR DAILY SCHEDULE

### Greeting!

**Circle**—theme and seasonal ideas

### Learning Centers—

(teacher directed/self initiated)

Science table

Home living

Blocks, large building toys

Small motor manipulatives

Texture tables—water, sand, rice, pasta, beans

Woodworking

**Art**—creative process and directed

### Enrichment Programs

**Music**—songs, signing, rhythm instruments

**Creative Movement**—large muscle development

**"Rainbow"**— Museum, Seasonal, Our Town Room

**Science**, wildlife habitat, gardening, nature trail

**Snack**—cooking experiences (allergy monitored)

### Story Time

Puppets/Drama/Fingerplays, Feltboard games

### Playgrounds

3 Age levels and Sports grassed area

Inside riding, climbing and game rooms



## RESOURCE TEACHERS

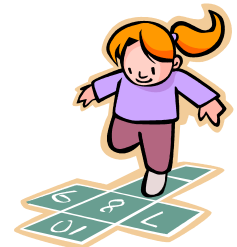
This staff enhances the student/teacher ratios to facilitate

- interaction strategies for group games
- breaking down fine and/or gross motor tasks
- modeling how to initiate and sustain friendships
- verbal exchanges to improve vocabulary and speech

Dear Parent:

For 43 years, St. Stephen's has endeavored to meet the needs of families in the community. Our program for children 1 1/2 through 5 years of age is designed to offer the first safe, caring foundation away from home. Additionally, we provide an excellent academic preparation for children to enter elementary private or public schools. As a leader in Early Childhood Education, we scaffold instruction to guide our children through all the appropriate skill sequences for each age grouping. Our classes present a well planned, creative progression of exciting subject themes. A child beginning with 1 1/2 year old play may grow through three or four differing years of cognitive, speech/language, fine/gross motor skills, and social/emotional development. Elementary school teachers have "raved" about the preparation of our "graduates", as having a well balanced social and academic foundation. We strive to keep activities at all levels very fun, challenging and successful.

Thank you for your interest in St. Stephen's Preschool. We look forward to having you as one of our families.



## KINDERGARTEN READINESS

- Handwriting Without Tears (fine motor development)
- Phonological/Phonemic Awareness (letter/sound recognition, reading and writing readiness)
- Direction Following (receptive language and comprehension), Memory and Retrieval activities.
- Vocabulary Building/Speech/expressive and pragmatic language, speak in a small and large group
- Logical Thinking and Problem Solving
- Math Our Way , AIMS (Activities Integrating Mathematics and Science) and Hands-On Standards (manipulatives, graphing, sequencing, patterning)
- Executive thinking skills—focus, self-control, making connections, self-directed to initiate/complete tasks
- Opportunities for problem solving and character building

## SPECIALIZED SCREENING SERVICES/ PARENT RESOURCE SERVICES

- PARENT-TEACHER CONFERENCES
- SPEECH, LANGUAGE & HEARING SCREENINGS
- VISION SCREENINGS
- “SPARK PROGRAM”-20 MINUTES EACH DAY  
GROSS MOTOR/SENSORY INTERGRATION
- FAIRFAX COUNTY CHILD FIND OR PRIVATE REFERRALS (WHEN APPROPRIATE)
- PARENT LIBRARY AND SUPPORT PROGRAMS



## OUR CURRICULUM IS DESIGNED TO:

- provide a routine to give children security and teach organizational skills
- use fun sound, color, shape, size, letter and number activities to prepare for reading, writing, math and science
- guide positive verbal and physical social interaction which teaches problem solving with peers
- use a minimum of help techniques in open-ended activities to provide a child's maximum independence and creativity
- use PLAY encouraging children to explore, expand abilities, follow directions, sequence steps and develop age appropriate skills
- encourage use and coordination of the whole body and all the senses
- help children care for all living things and to contribute to school, work and the community

## OUR STAFF:

Our staff is degreed and experienced. Each staff member is required to participate in continuing education, staff enrichment and in-services. Each staff member is CPR and First Aid certified.

## PROFESSIONAL ORGANIZATION PARTICIPATION:

- Administrators of Early Childhood Church Programs (AECCP)
- Fairfax County Office of Children (Approved Child Care Centers)
- National Association for Education of Young Children (NAEYC)
- Northern Virginia Association for Education of Young Children (NVAEYC)
- Northern Virginia Private Schools
- Southern Early Childhood Association
- Virginia Association for Education of Young Children (VAEYC)

## REGISTERED WITH OR INSPECTED BY:

- Fairfax County Health and Fire Departments
- Division of Licensing Programs with Church Sponsorship, Division of Social Service, Commonwealth of Virginia

## PROGRAMS BY AGE

Registration Fee (non-refundable) \$75.00

Activity Fee \$60.00

### 4 YEARS OF AGE through PRE-K

(must be 4 by September 30, 2012)

#### 9:00 TO 1:00 PROGRAM

##### 5 DAYS (MON.-FRI.)

Tuition \$555.00 per month

##### 3 DAYS (MON., WED., FRI.)

Tuition \$375.00 per month

#### 10:00 TO 2:00 PROGRAM

##### 3 DAYS (TUES., WED., THURS.)

Tuition \$375.00 per month

##### 2 DAY (TUES., THURS.)

Tuition \$260.00 per month

---

### 3 YEARS OF AGE

(must be 3 by December 30, 2012)

#### 9:00 TO 1:00 PROGRAM

##### 3 DAYS (MON., WED., FRI.)

Tuition \$375.00 per month

#### 10:00 TO 2:00 PROGRAM

##### 2 DAY (TUES./THURS.)

Tuition \$260.00 per month



## PROGRAMS BY AGE

Registration Fee (non-refundable) \$75.00

Activity Fee \$60.00

### 1 1/2 to 2 1/2 YEARS OF AGE

(must be 18 mos. by Sept. 30, 2012)

#### 9:00 TO 1:00 PROGRAM

##### 2 DAY (WED., FRI.)

Tuition \$260.00 per month

#### 10:00 TO 2:00 PROGRAM

##### 2 DAY (TUES., THURS.)

Tuition \$260.00 per month

---

### EXTENDED PROGRAM

#### BRAINY BUNCH

(must be 4 by September 30, 2012)

#### 1:00 TO 3:00 PROGRAM

##### 3 DAY (MON., WED., FRI. Afternoons)

Tuition \$185.00 per month

Literacy Book Buddies

Languages, Signing

Social-Friends

Computer studies

Math games

Science exploration

Drama Sports

Character Building

